

## **Historic, Archive Document**

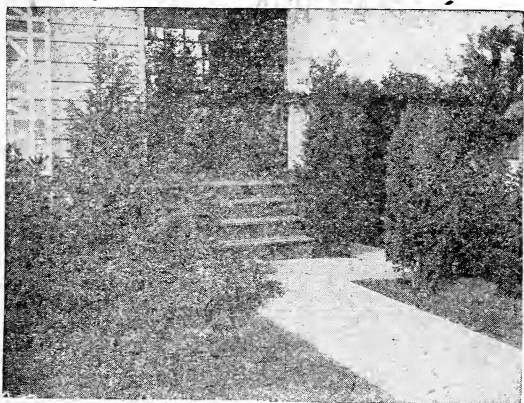
Do not assume content reflects current scientific knowledge, policies, or practices.



1927

Catalog

*What is a home  
without some plants?*



A FOUNDATION PLANTING

**WM. F. MILLER**

*NURSEYMAN*

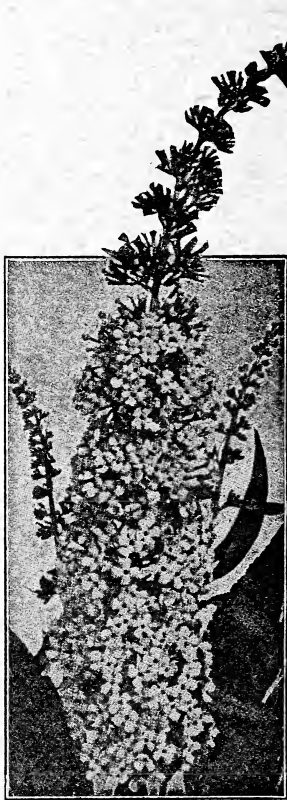
GLOUCESTER CITY, N. J.

(HIGHLAND PARK)

*Phone: Gloucester 72*

Wm. F. Miller, Nurseryman, Gloucester, N. J.

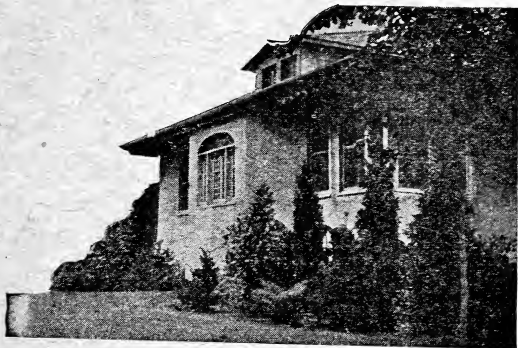
---



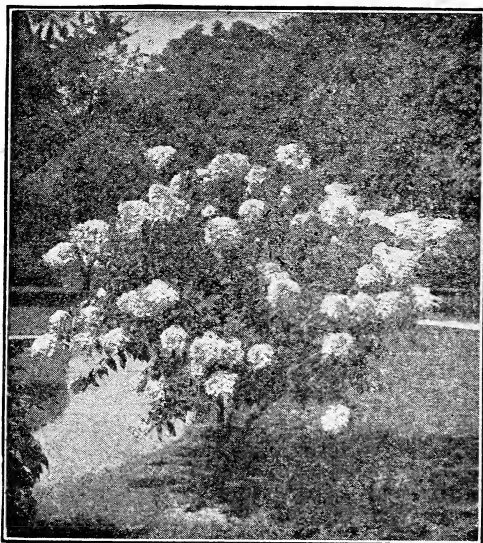
BUDDLEIA—BUTTERFLY BUSH  
Blooms from July until frost

## ORNAMENTAL TREES AND SHRUBBERY

ALTHEA or Rose of Sharon—Red, white or purple. Makes a pretty dwarf shrub for single planting.	.40
ALMOND (Flowering)—Small pink or white bloom lasting a long time. Very pretty.	1.25
BUTTERFLY BUSH or Summer Lilac—In bloom from July until frost. (See cut)	.40
BARBERRY (Japanese)—Red berries all winter.	.10 to .35
CRAB (Flowering) One of the best dwarf trees. Apple blossom pink like a mass of roses.	1.50
DEUTZIA—Large cluster of white flowers	.40
GOLDEN BELL, Forsythia—Stems all covered with flowers before the leaves come. Blooms early in spring.	.40
HYDRANGEA, Tree Form—Large blooms fine for single planting.	1.25
HYDRANGEA, P. G. —The best and hardiest of all. Immense cone shape flowers	.50

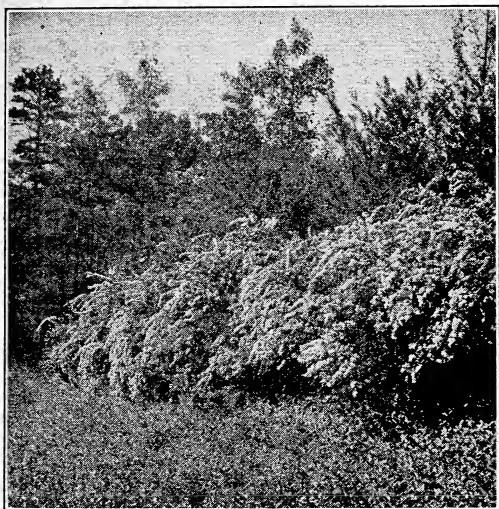


AN EVERGREEN PLANTING



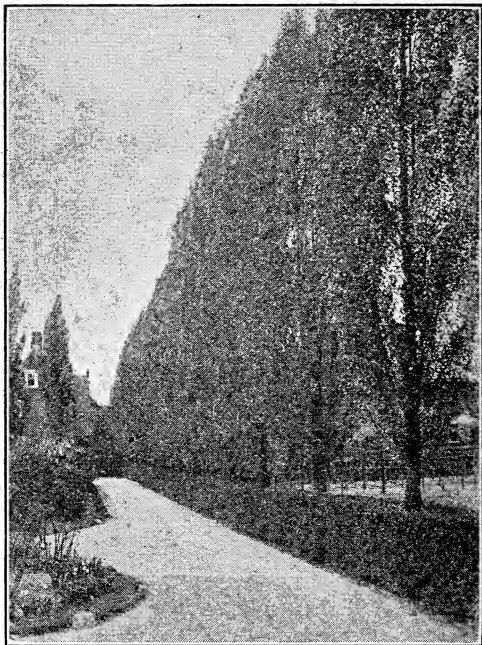
HYDRANGEA P. G.

- HYDRANGEA, Hills of Snow—Ever-blooming, white. .50
- HYDRANGEA, French varieties—Blue, white or pink. Used mostly at seashore 1.00
- LILACS—purple or white. Strong plants .40
- MULBERRY (Weeping)—Beautiful tree with branches touching ground. 2.50 to 3.00
- ORANGE BLOSSOM, (Philadelphus)—Fine white, sweet scented flowers in May .40
- PEACH (Flowering)—Covered with red blossoms early. .50
- QUINCE (Flowering)—A mass of red blooms, very early. 1.25



### SPIREA VAN HOUTTE

- SWEET SHRUB—The old fashioned, sweet smelling shrub. .40
- SPIREA, Van Houtte or Bridal Wreath—One of the most handsome and useful of the hardy shrubs. .40
- SPIREA, Anthony Waterer — Showy flowers, crimson in color, blooms all season if flowers are cut off. Dwarf. .40
- SNOWBERRY—Showy, waxy berries, white in autumn. .40
- UMBRELLA TREE, Catalpa Bungei—Umbrella shaped head. \$2.00 to 3.00
- WEIGELA—Fine pink and red, bell shape flowers in abundance. .50



LOMBARDY POPLARS

**SHADE TREES**

POPLAR, Lombardy—Upright in growth:  
used mostly for windbreaks and screens.

.50 to 1.25

ORIENTAL PLANE—The best, most pop-  
ular and rapid growing.

8 to 10 ft. .... 3.00

10 to 12 ft. .... 3.50

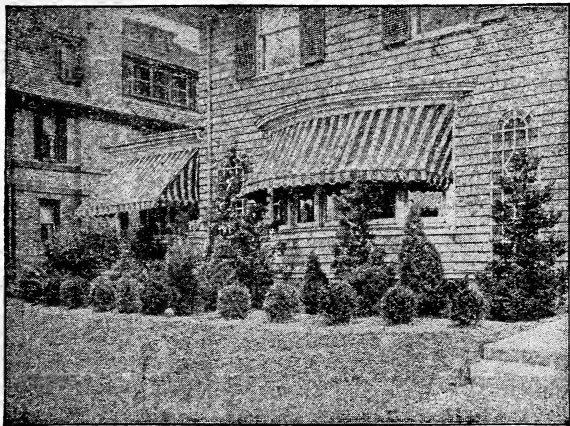
MAPLES—Silver Leaf 8 to 10 ft. 1.50



**Wm. F. Miller, Nurseryman, Gloucester, N. J.**

---

MAPLES—Wiers Cut Leaf 8 to 10 ft. 1.75  
MAPLES—Norway—Fine tree but slow grower. 3.00



It's Not Finished 'Till It's Planted

### EVERGREENS

We have a large assortment and all sizes in ARBORVITAE, SPRUCES, CEDARS, RETINOSPORAS, JUNIPERS, ETC.

We specialize in EVERGREENS for Porch Plantings. Come and look us over.

### HEDGING

CALIFORNIA PRIVET—Fine well rooted plants that will make a hedge in one season. .04 to .06

BALL PRIVET—Fine ball shaped plants .50 up

BOXWOOD—Fine single plants. .50 up



A Driveway Bordered With California Privet

**BARBERRY, Japanese**—Fine for hedging. Needs no trimming. Full of red berries all winter.

Small size for lining out. per 100 6.00

Good in place of wire. Stops walking across corners and in front of evergreens. Very showy. Fine plants. .15 to .35

### FLOWERS

**PEONIES**—The earliest and hardiest of all flowers. Blooms for Decoration Day. As fragrant as a rose. Every home should have some.

Three, assorted colors . . . . . 1.00

Six, assorted colors . . . . . 1.75

**ROSES, Monthly or Hybrid Teas**—All of the old favorites and the best of the new.

2 year size . . . . . .60 to .75

Climbing Roses— all the range of colors .60



**GLADIOLUS—One of My Specialties**

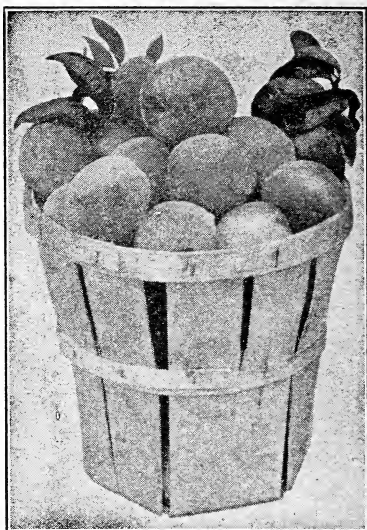
**GLADIOLUS**—The modern Gladiolus, due to its ease of culture, freedom from disease, its adaptability to practically all climates and soils, its excellent keeping qualities as a cut flower, together with the great variety and beautiful blending of colors, render it one of the most popular flowers.

Plant at least a 100 at different times and have flowers until frost.

Special list on request

**VINES**

- CLEMATIS**—That beautiful star shaped flower that scents the whole neighborhood. .40
- HONEYSUCKLE**, Hall's Japanese—Fragrant and hardy. .40
- WISTERIA**—Beautiful purple, fine for arbor. Long lived. .40
- IVY**, Boston or Japanese—Clings firmly to any hard substance. .40



A Basket of Peaches

### FRUITS

- PEACH—Belle of Georgia, Elberta and many others. .50
- APPLES—Transparent, Grimes Golden, Staymans Winesap, Delicious and many others. .65
- CRAB APPLE—That beautiful HYSLOP tree. .65
- PEARS—Bartlett, Seckel and Kieffer. .65
- PLUMS—Japanese and Hybrid varieties .65
- CHERRIES—Sour: Montmorency, large; Early Richmond. .65
- CHERRIES—Sweet: On Mazzard Roots. Sure to grow. Ox Heart, Black Tartarian and others. .75

QUINCES—Orange and Meech.	.75
ENGLISH WALNUT—Grafted. and prolific.	Hardy 2.50

### SMALL FRUITS

CURRANTS—Large plants	15c ea	1.25 dz.
GOOSEBERRIES—Large size	20c ea	1.75 dz.
BLACKBERRIES—	10c ea	1.75 dz.
RASPBERRIES—Everbearing		.50 dz.

### GRAPE VINES

CONCORD— Black. Best of all.	1 yr.	20c
	2 yr.	35c
MOORE'S EARLY—Large and juicy.	2 yr	35c
NIAGARA—White.	2 yr.	35c
CATAWBA—Red. Grapes grow slow around here.	2 yr.	35c
Any kind 3 for \$1.00.		

### ROOTS

ASPARAGUS—Two year extra size roots	\$1.25 per 100
RHUBARB—Fine large strawberry kind	60c doz.
CANNA BULBS—Assorted colors and kinds.	75c doz.

Special prices on large lots of anything  
in quantities to Planters, Florists and  
Nurserymen.

GROUND BONE—The best fertilizer for trees, lawns and all around use. Espec- fine ground, for us.	50c for 10 lbs.
--	-----------------

*Say it with Flowers*

*And Grow Them Yourself*

Wm. F. Miller, Nurseryman, Gloucester, N. J.

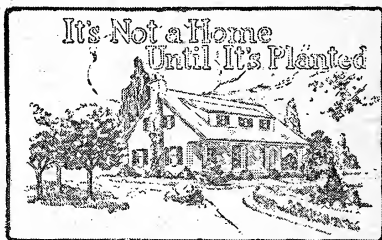
## *Why Not Buy At Home?*

Save dollars and have the advantage of seeing your stock before buying.

Save Agent's Commission.

Save Freight or Expressage.

Save DISAPPOINTMENT.



We are located  $\frac{1}{2}$  mile from Mt. Ephraim, and in the Highland Park district, Gloucester City, N. J. Mt Ephraim bus via Gloucester from Reading ferry passes within one minute walk of our nursery. Get off at Park Avenue and Market Street.

# WM. F. MILLER

P. O. GLOUCESTER CITY, N. J.

Phone Gloucester 72.

---

The Tingle Printing Co. Pittsville, Md.